

# Are you a Monster, a Princess, or a Monster Princess?

Choose your favorite iron-on transfer from  
***The Monster Princess*** by D. J. MacHale and  
illustrated by Alexandra Boiger.

You can print on a t-shirt, a pillow, a tote bag, etc.!

Template 1—I'm a Monster!

Template 2—I'm a Princess!

Template 3—I'm a Monster Princess!

Don't forget  
to ask an  
adult for  
help!

## Here's what you'll need:

- Printer
- Iron-on transfer printer paper  
(Printer paper can be purchased from your local office supply store!)
- An iron
- A flat, hard, smooth, non-porous ironing surface
- A clean soft cloth
- Something to transfer onto (t-shirt, tote bag, etc.)

## Printing your image:

- Make sure that you have selected 'Mirror', 'Flip', 'Reverse' or a similar setting in your application, if it is required, so that the image will print backwards.
- Test by printing your image on a sheet of plain paper.
- Insert a single sheet of iron-on transfer paper in your printer. It is easy to tell which side to print on, as one side is blank (to print on), and one side has the line. Make sure that the iron-on transfer paper is not creased or curled.
- In your printer driver, select the highest dpi setting and the correct paper setting for your type of printer.
- Set the paper thickness lever on your printer for standard paper.
- Print your iron-on transfer image.
- Remove your printed iron-on transfer sheet from your printer and allow the ink to dry. Do not handle the iron-on transfer paper while the ink is drying.

## Transferring your iron-on transfer image:

- Trim away any unprinted paper around your image that you do not want to transfer.
- Transfer your image onto your fabric using a hand iron.
- Preheat the iron on its highest temperature setting for at least 8 minutes. The iron must be very hot! Do not use steam.
- Place your t-shirt, tote bag, etc., on an ironing surface with the open end hanging over the edge and smooth it flat so that there are no wrinkles.
- Place the image face down on your item so that the area that you want the image to be transferred to is centered on the item's surface. Smooth out the fabric.
- Press the iron firmly over the transfer for 15-20 seconds in several areas, making sure to cover the entire transfer in this process. It is important that you press straight down for this step, and lift up the iron completely when repositioning to do another area. Then, using a circular motion and light pressure, evenly heat the transfer for another 15-20 seconds. Put the iron down and gently rub the hot transfer with your soft, clean cloth for 5-10 seconds.

*I'm a  
Monster!*



Art © Alexandra Boiger



*I'm a Princess!*

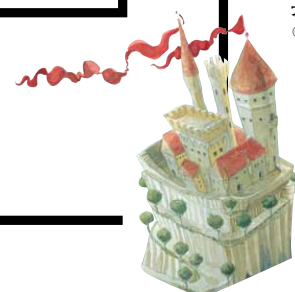
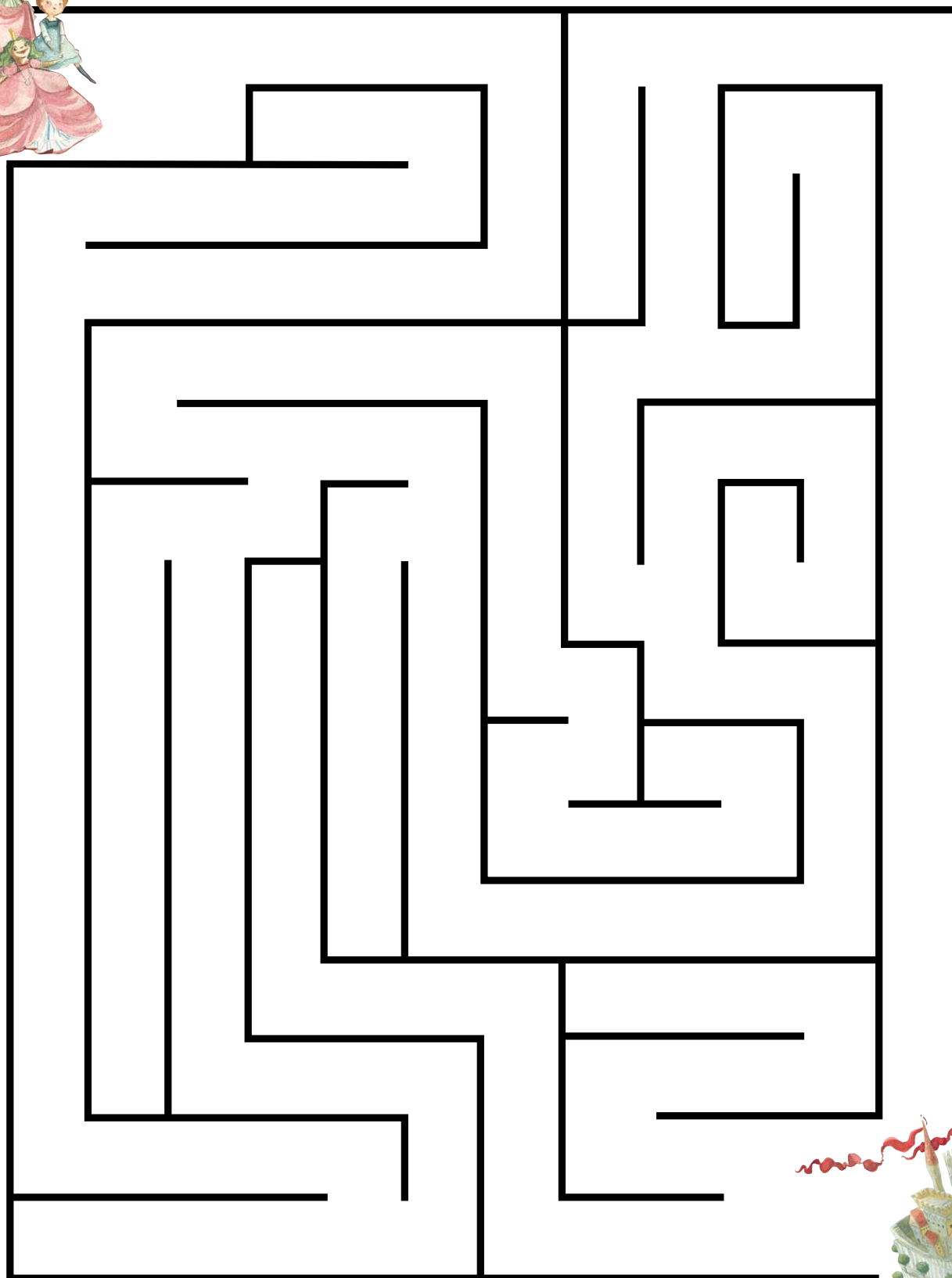
Art © Alexandra Boiger



*I'm a  
Monster  
Princess!*

Art © Alexandra Boiger

*Help Lala lead the three princesses to safety!*



art © Alexandra Boiger





*Help Lala count and  
collect enough krinkle  
nuts to satisfy the  
hungry Mr. Wiffle!*



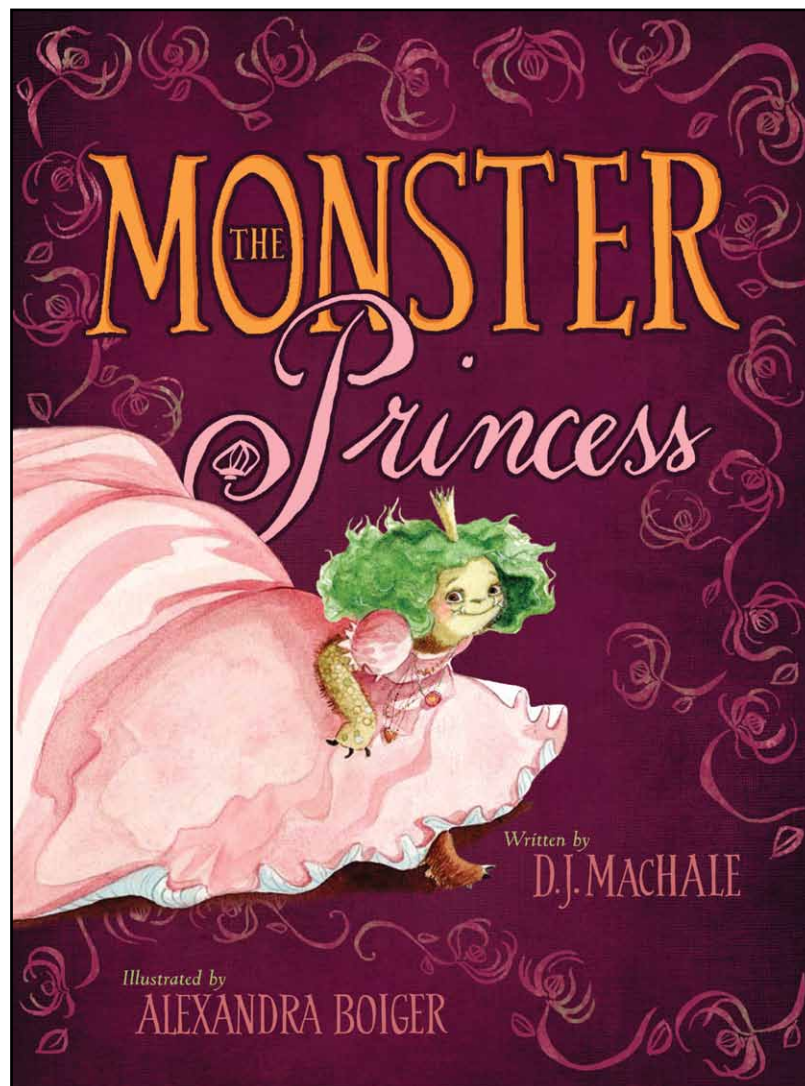
How many did you find? \_\_\_\_\_

Create your own book cover for

# THE MONSTER *Princess*

by D.J. MACHALE *and* ALEXANDRA BOIGER!

Print out the next page and draw your own art from the book.



MONSTER

THE

Princess